

Niagara® 2100

Streaming Media Appliance



Expand your audience through the power of streaming video.

Innovative Streaming Solutions.

ViewCast has broken the price/performance barrier with its latest innovation, the Niagara 2100. Packed with many of the same powerful features found in ViewCast's professional-grade streaming appliances, the Niagara 2100 offers uncompromised quality and simplicity of operation in a compact, low-cost streaming solution.

Uncompromised Quality. The Niagara 2100 is built on the legendary quality of ViewCast Osprey® technology. This means you can count on the same highly reliable performance demanded by others who utilize ViewCast technology, including the world's leading broadcasters and content delivery networks.

Ease of Use. The Niagara 2100 allows even non-technical personnel to stream high-quality live video. Its built-in Web interface simplifies system set-up and operation, allowing complete system control from anywhere on the network. Just set your streaming parameters from the intuitive interface and you can begin streaming in multiple resolutions and bit-rates with a single push of the front panel "stream" button.

Compact Form Factor. At just the size of a half rack (1 RU x 7.5") the Niagara 2100 fits easily into any live production environment.

Maximize Your Audience. ViewCast SimulStream® technology comes standard with the Niagara 2100, which means you can stream in multiple, simultaneous resolutions and bit rates to computers, cell phones and mobile devices anywhere around the world. It's the ideal low-cost, easy-to-use solution to help you expand your audience in the digital media marketplace.

Ideal Solution for:

- > Corporations
- > Government
- > Ministries
- > Network Service Providers
- > Broadcasters

Applications

- > Webcasting
- > Live streaming
- > Podcasting
- > Mobile TV
- > Video-on-demand

Key Attributes

- > Easy-to-use Web interface for system control and management
- > One-button activation of multiple, pre-programmable streaming profiles
- > Powerful, compact self-contained unit for rack mount or on-location applications
- > Simultaneously streams multiple resolutions at multiple data rates in Windows Media® (Silverlight™ compatible) format
- > Component, Y/C (S-Video), composite video inputs, balanced and unbalanced stereo audio inputs
- > Front display of audio, stream start, video present, and alarms
- > Includes Niagara SCX® software for setup, control, and monitoring

Niagara® 2100

Streaming Media Appliance

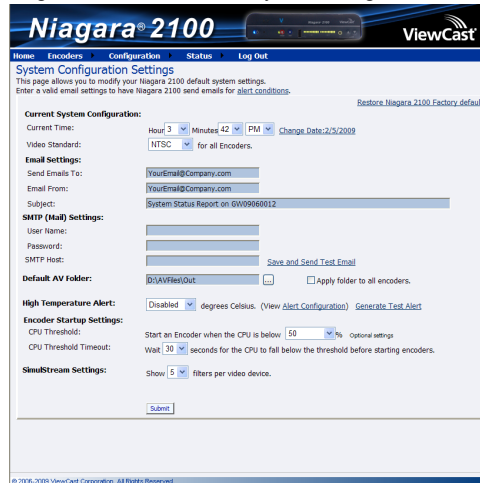
Niagara 2100 front view



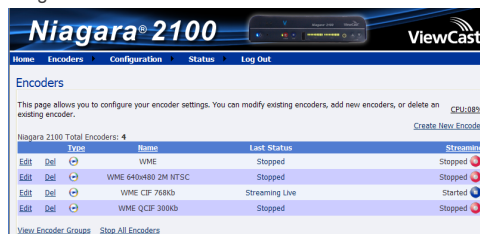
Niagara 2100 back view



Niagara 2100 Web Interface System Configuration Settings



Niagara 2100 Web Interface Encoder Profiles



The built-in Web interface of the Niagara 2100 simplifies system set-up and operation. Simply set your streaming parameters from the intuitive interface and you can begin streaming in multiple bit-rates and resolutions with the push of a button.

Encoding Formats

- Windows Media (*Silverlight compatible*)

Inputs:

Video:

- Component (3 x BNC)
- Y/C (S-Video) (2 x BNC, mini-DIN adapter included)
- Composite (1 x BNC, RCA adapter included)

Audio:

- Balanced stereo (2 x XLR)
- Unbalanced stereo (2 x RCA)

Connectivity:

USB Ports:

- 1 front panel
- 1 rear panel

Ethernet:

- 2 x 1Gbit

Software:

- Niagara SCX
- Niagara SCX Web Interface
- SimulStream

Processing:

Pre-processing:

- Scaling, cropping, de-interlacing, inverse telecine, closed caption rendering

Weight:

- 4.9 lbs (2.2 Kgs)

Dimensions:

- 7.5" W x 11.5" L x 2" H (19cm W x 29.2cm L x 5cm H)

Power:

- 12V DC (AC to DC adapter included)

Hardware Warranty:

- 1 Year limited hardware warranty

